

# Parenting for Early Childhood Development

## A multi-sectoral approach - Uganda

Global Initiative to support Parents - Africa regional consultation on support for parents and caregivers of children and adolescents

Presenter: Daphne Mugizi, ECD SPECIALIST, UNICEF UGANDA

22<sup>nd</sup> June 2022



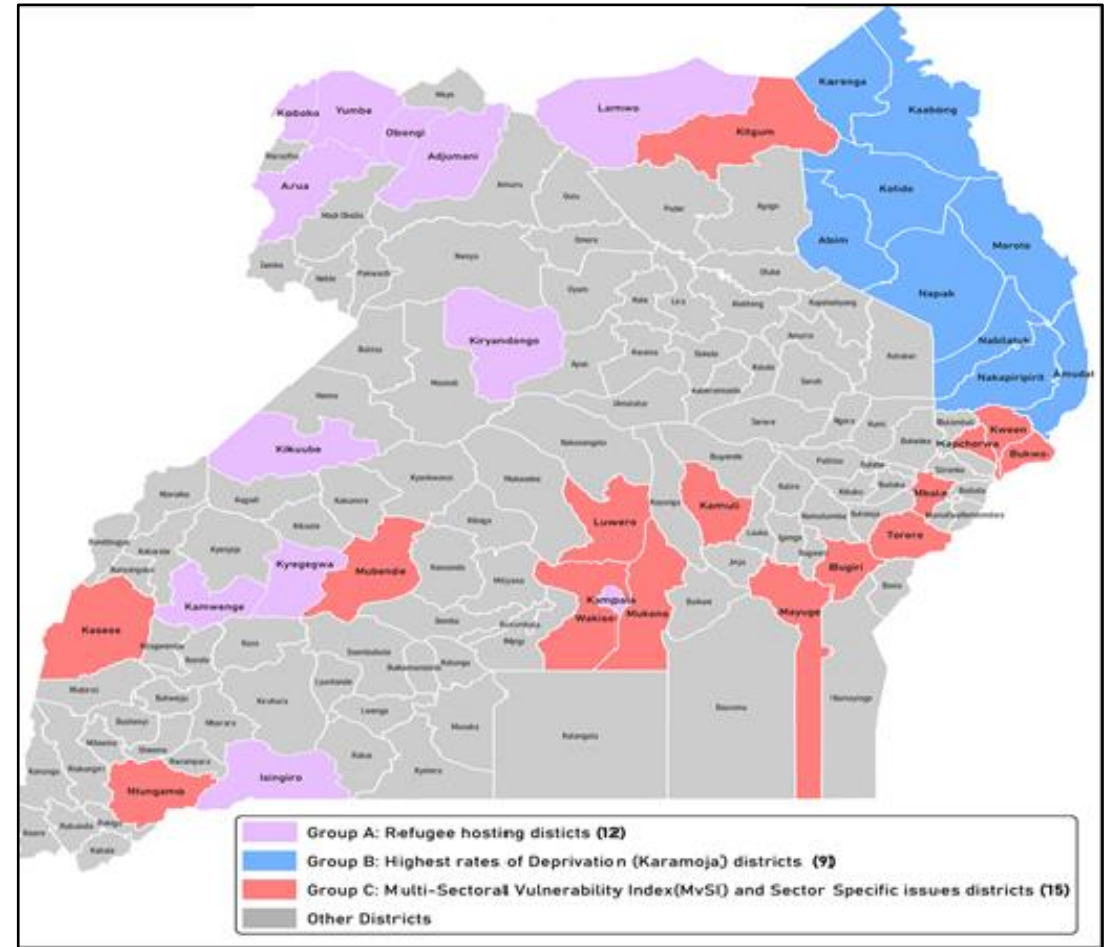
THE REPUBLIC OF UGANDA



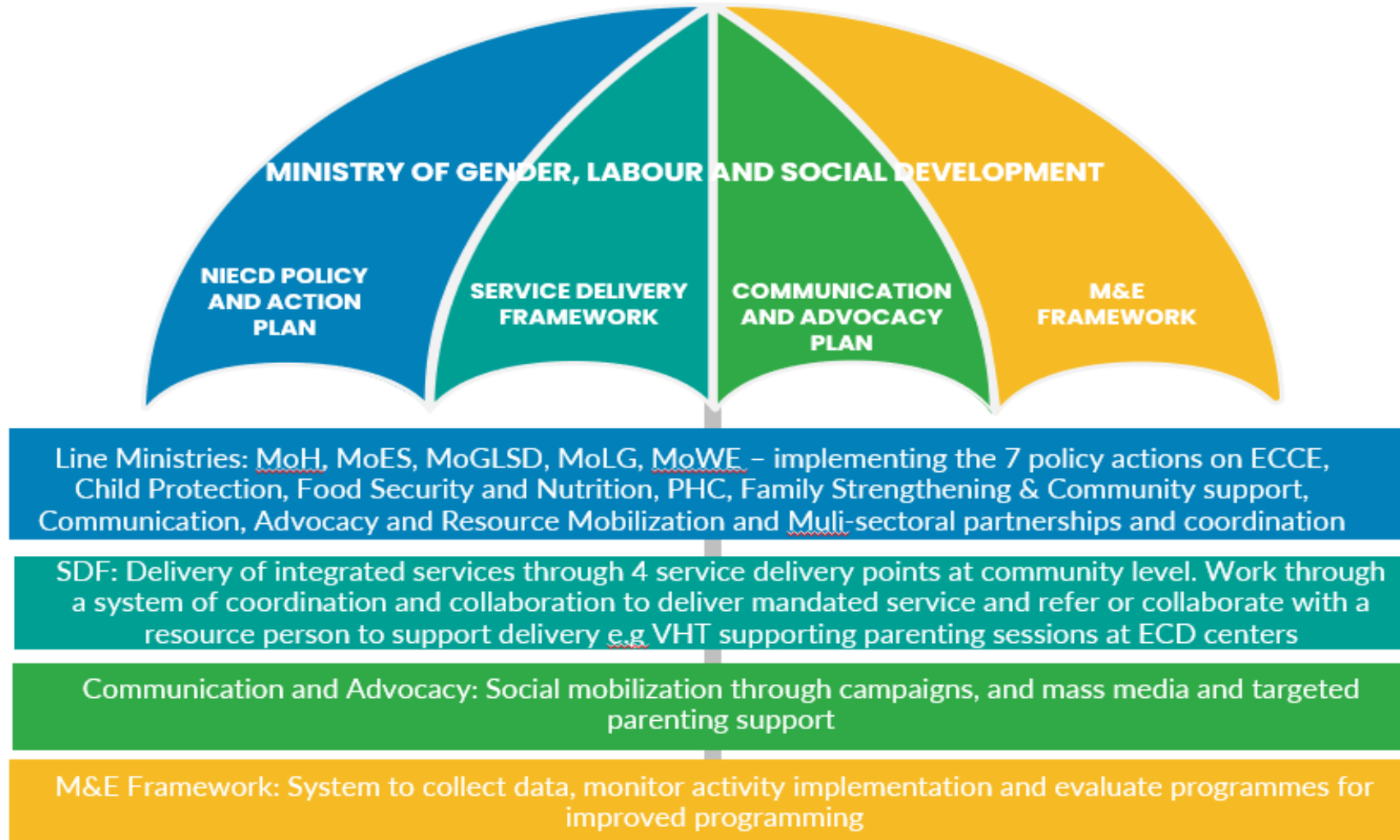
# Situation



## Map of Uganda showing the 29 UNICEF focus Districts



# A multi-sectoral delivery approach



# Parenting Through Health Facilities

---

- Developed the Key Family Care Practices (KFCPs)
- Health workers capacity building – Care for Child Development, KFCPs
- Training of 4,056 community resource persons on the KFCPs
- Home visits through VHTs
- Early identification of children with disabilities







# Parenting through ECD Centers

- Parenting programme through ECD centers – parents' groups formed and trained on the 22 Key Family Care Practices with focus on learning through play over 40,000 parents reached in 2020/1
- Delivery through trained caregivers (Community Child Care Programme revised modules including KFCPs) and other resource persons e.g., VHTs, para-social workers, ToTs
- Home visits conducted for parenting support
- Resources: KFCP booklets (translated), Parents' Book, Sesame materials (multi-media content for parents and children)
- Referrals for more specialized services



# Parenting through communities

- Community dialogues conducted to highlight issues that hinder positive parenting and how these can be solved at community and household level
- Model parents with emphasis on positive parenting, safety and security for children
- KFCPs – key messages through radio programmes (programme continuity during Covid-19 and wider reach geographically)
- Key parenting messages delivered in Places Of Worships (KFCPs incorporated into sermons)





# Lessons learned and scale up

---

- Strengthening coordination at all levels for improved programme delivery at both national and sub-national level
- Faith based organizations delivery model – Community level structures
- Introduce Caring for the Caregiver
- Need to work on strengthening flow of data to support planning and decision making at national and sub-national level







Thank You!

DAPHNE MUGIZI  
ECD SPECIALIST  
UNICEF, UGANDA

EMAIL: [dmugizi@unicef.org](mailto:dmugizi@unicef.org)

unite for  
children

unicef 