



Education, not discrimination: Learning from the Malawi inclusive pre-schools project

Guy Le Fanu, Sightsavers. 4th International Conference on ECDE in Pakistan. Thursday, 23 February 2023.

Structure of presentation

1. Key facts & figures
2. Pre-school provision in Malawi
3. Sightsavers' ECDE project in Ntcheu
4. Application of learnings to the project



Key facts and figures about Malawi



**Population: 19.89 million
(World Bank, 2021)**

**Human development index:
169/191 (UNDP, 2022)**

**Disability prevalence study
(Thyolo District) – children
aged 2-4 5.4% children aged
5+ 29.3% (Murphy et al, 2019)**

Pre-school provision in Malawi



Delivered in community-based childhood care centres (CBCCs) set up by CSOs or the communities themselves

Estimated 5,665 CBCCs serving 400,000 children aged 3 to 6, mostly in rural areas (Munthali et al, 2014)

Managed by community committees and largely staffed by volunteers, most with limited formal education (Neuman et al, 2014)

Formal responsibility of Ministry of Gender, Children, and Social Welfare (MoGCSW)

Assessment of CBCC system

Strengths

Locally owned services

Potential for child-centred learning

Dedicated volunteers

Low cost model

Weaknesses

Under-funded

State of CBCCs

Quality of human & material resources

Caregiver turnover

Lack of government supervision & investment

Sightsavers' ECDE project in Ntcheu District

1

Building on previous work in Ntcheu & Chikwawa Districts (from 2012)

2

Working with multiple stakeholders in 49 CBCCs

3

Supporting 201 children with disabilities in 2022 (139% increase from 2021, $\geq 50\%$ girls)

Application of learning to the project



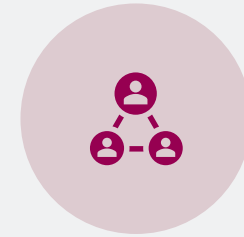
IEC MATERIALS



CHILD-
CENTRED
LEARNING



RESOURCING



INTEGRATED
SERVICES

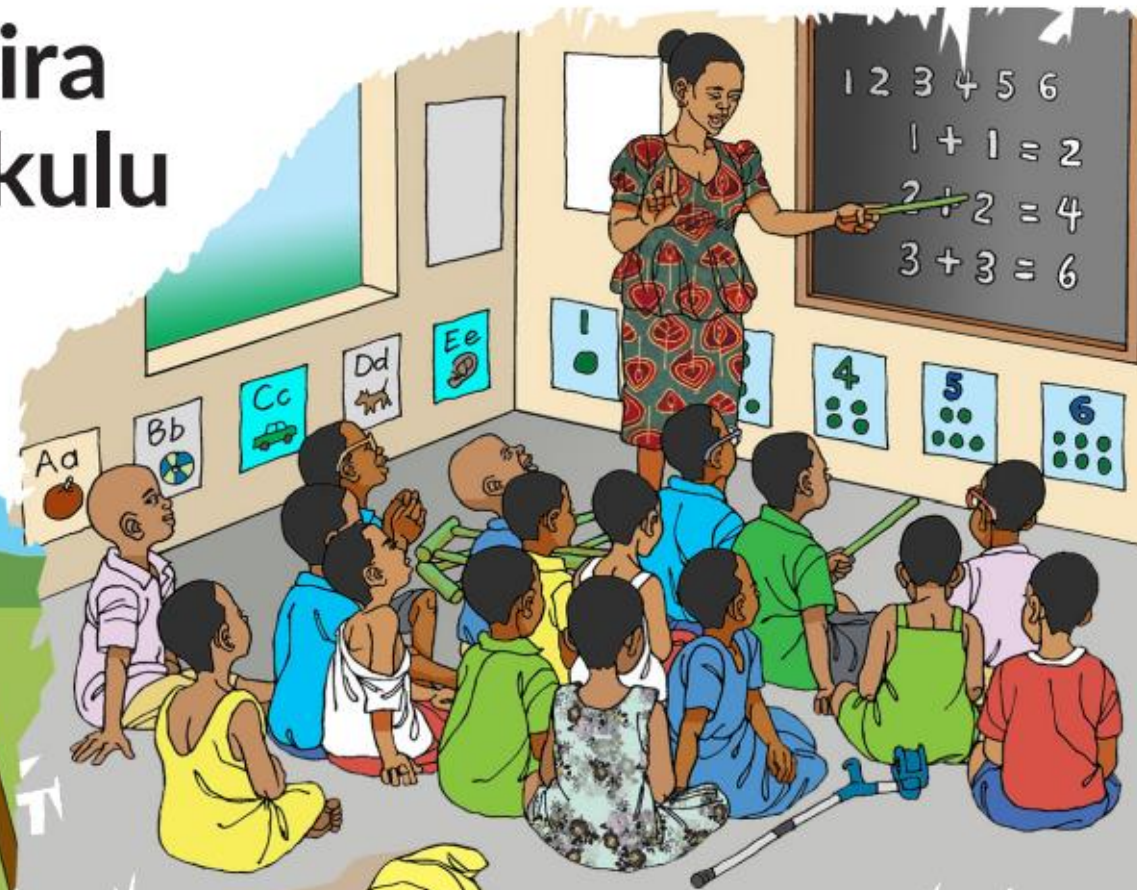


INCOME
GENERATION



ADVOCACY
WITH GOVT

Filipi tchatu yophunzitsira za ECD kwa alezi m'sukulu za mmera mpoyamba



Sightsavers

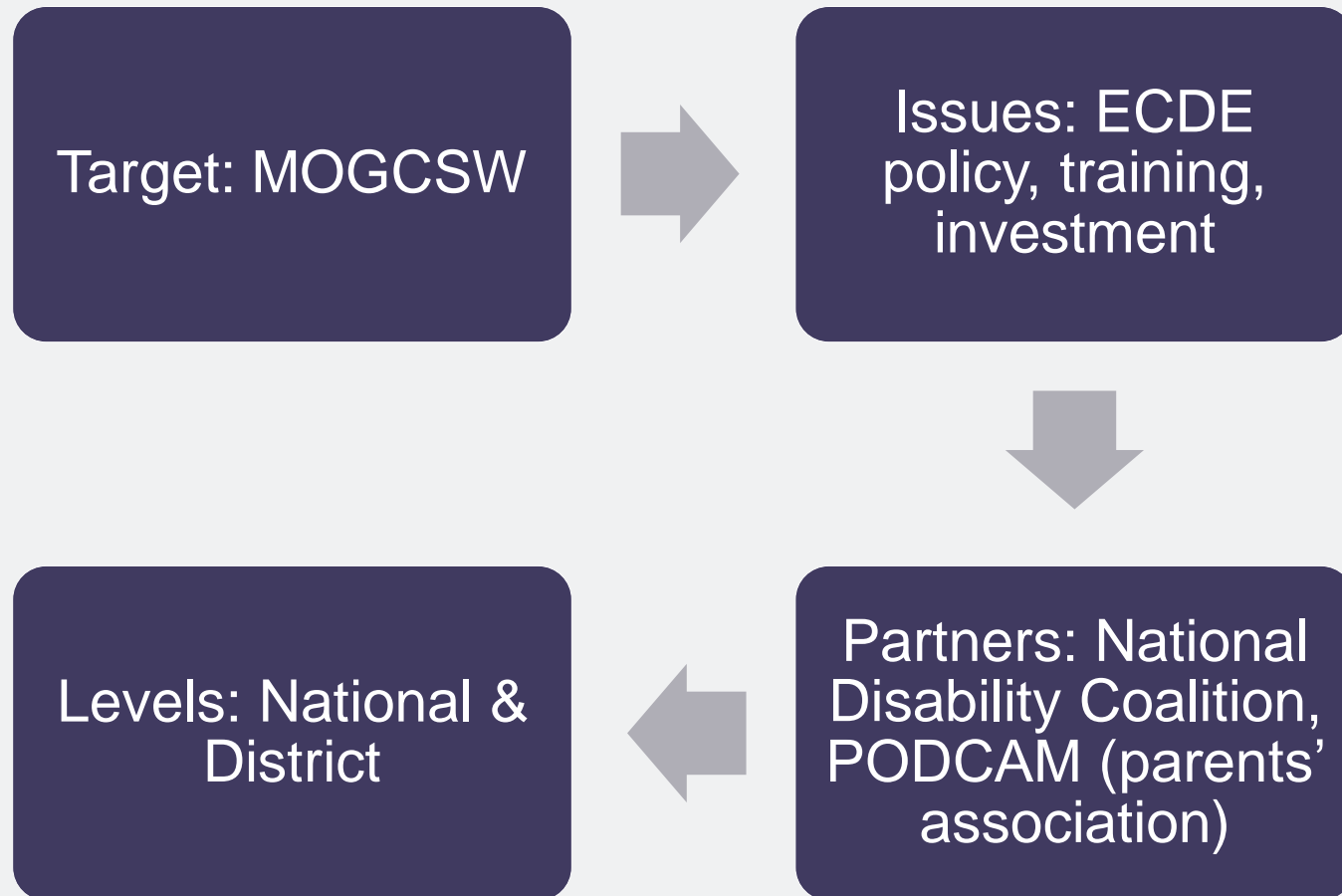








Advocacy



Differences & similarities between Malawi and Pakistan



Thank you!

For more information, contact
glefanu@sightsavers.org