

GLOBAL PARTNERSHIP FOR EDUCATION KNOWLEDGE AND INNOVATION EXCHANGE

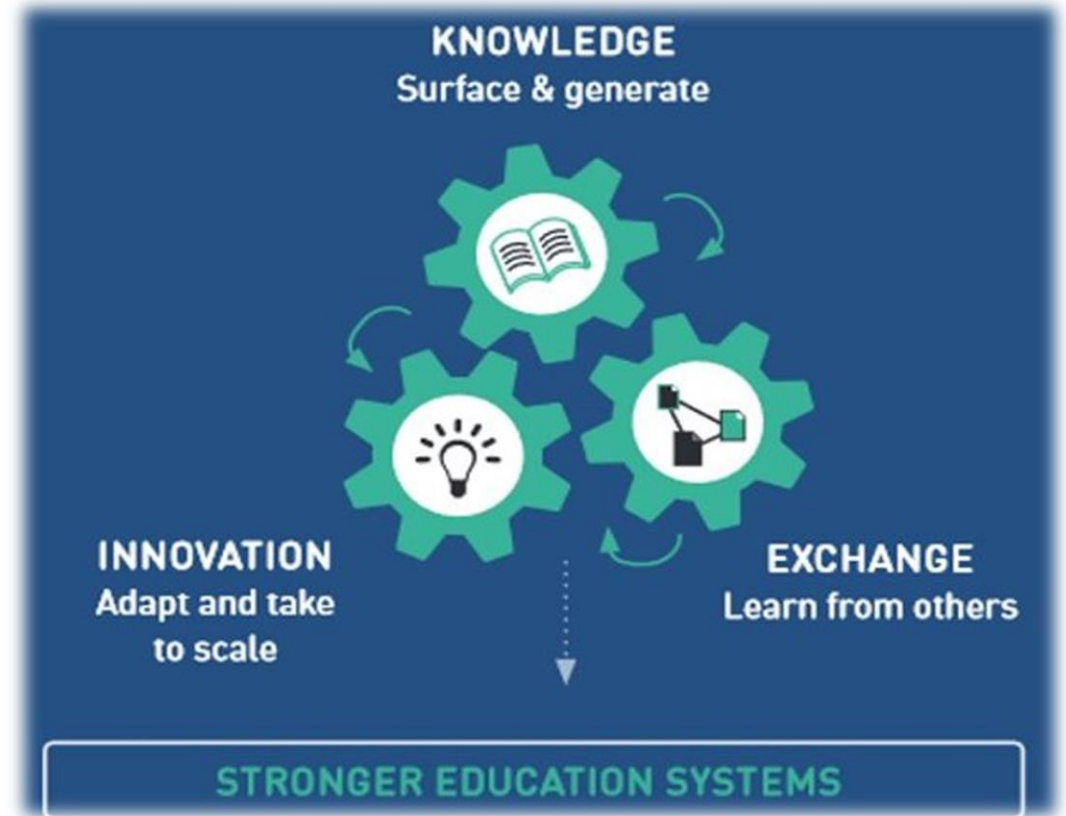
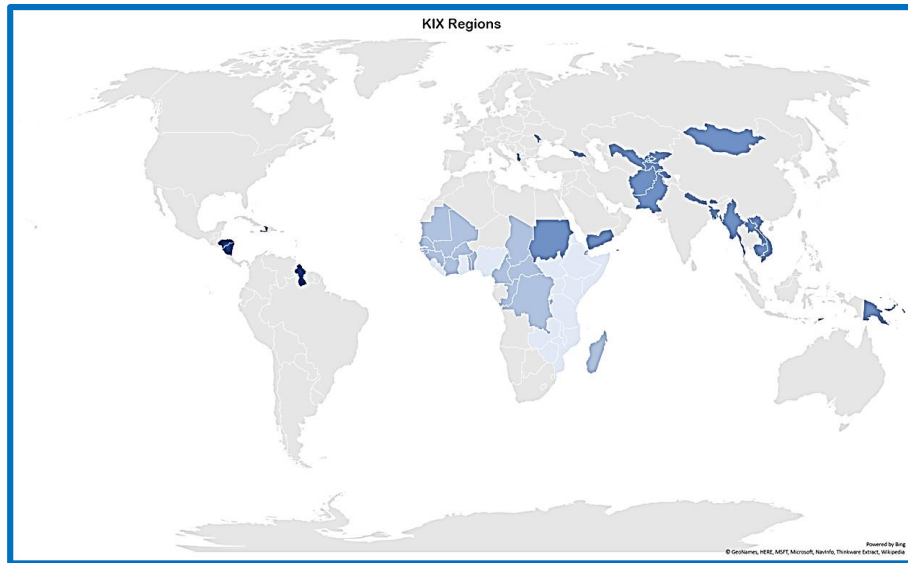
Joy Nafungo – Senior Program Officer, IDRC
jnafungo@idrc.ca



About the Knowledge and Innovation Exchange



KIX is a joint endeavour between the International Development Research Centre and The Global Partnership for Education



KIX Focus on ECCE



1. Generating evidence on what works in early learning
2. Exploring how to take to scale this evidence
3. Strengthening intercountry learning and sharing through KIX hubs
4. Supporting the use and uptake of evidence in policy
5. Synthesising the evidence to identify similarities and differences across topics and contexts

ECCE Topics



- Role of parents and teachers – Inclusion of children with special needs
- Gaps in curriculum content and teaching styles
- Teacher capacity building and classroom practice
- Strengthening school and community capacities for adoption of play-based learning
- Inclusive play-based learning
- Gender responsive transformation early childhood education
- Accelerated pre-primary
- Strengthening the capacity of education systems to implement ECE at scale and sectoral planning



Emerging evidence



- Inclusive ECE programmes promote participation of children in learning
- Parental and teacher beliefs on play impact learning
- Teachers embrace play-based pedagogy when governments fully mainstream play-based methodology in the curriculum
- In-service teacher training and support can transform the culture of learning at school levels.
- Teacher mentors who are trained specifically in play-based approaches can transform gender norms and inclusive practices.
- What constitutes school readiness? – guidelines
- Children as a resource to help meet the psychosocial and learning needs of other children
- Knowledge sharing to strengthen community ownership

Key messages and areas of research



- Training, support, and professionalization of ECCE teachers
- Developmentally appropriate curriculum and pedagogies
- Inclusion of children with disabilities and those from minority language groups
- Establishing standards or benchmarks for quality ECCE
- Integration of local knowledges in ECCE approaches and practices
- Building teacher capacity in gender responsiveness and tackling gender norms and bias
- Mother tongue teaching and learning materials and trainings for ethnic minority teachers
- Enhance the use of data for decision-making
- Expanding funding for ECCE



Next Steps for KIX



- ❖ Early learning synthesis
- ❖ Continuous knowledge sharing, exchange and learning through KIX hubs
- ❖ Second round of funding for ECCE

Thank
you



GPE KIX
KNOWLEDGE INNOVATION EXCHANGE