

# Data-driven ECD Programmes in Informal Settlements

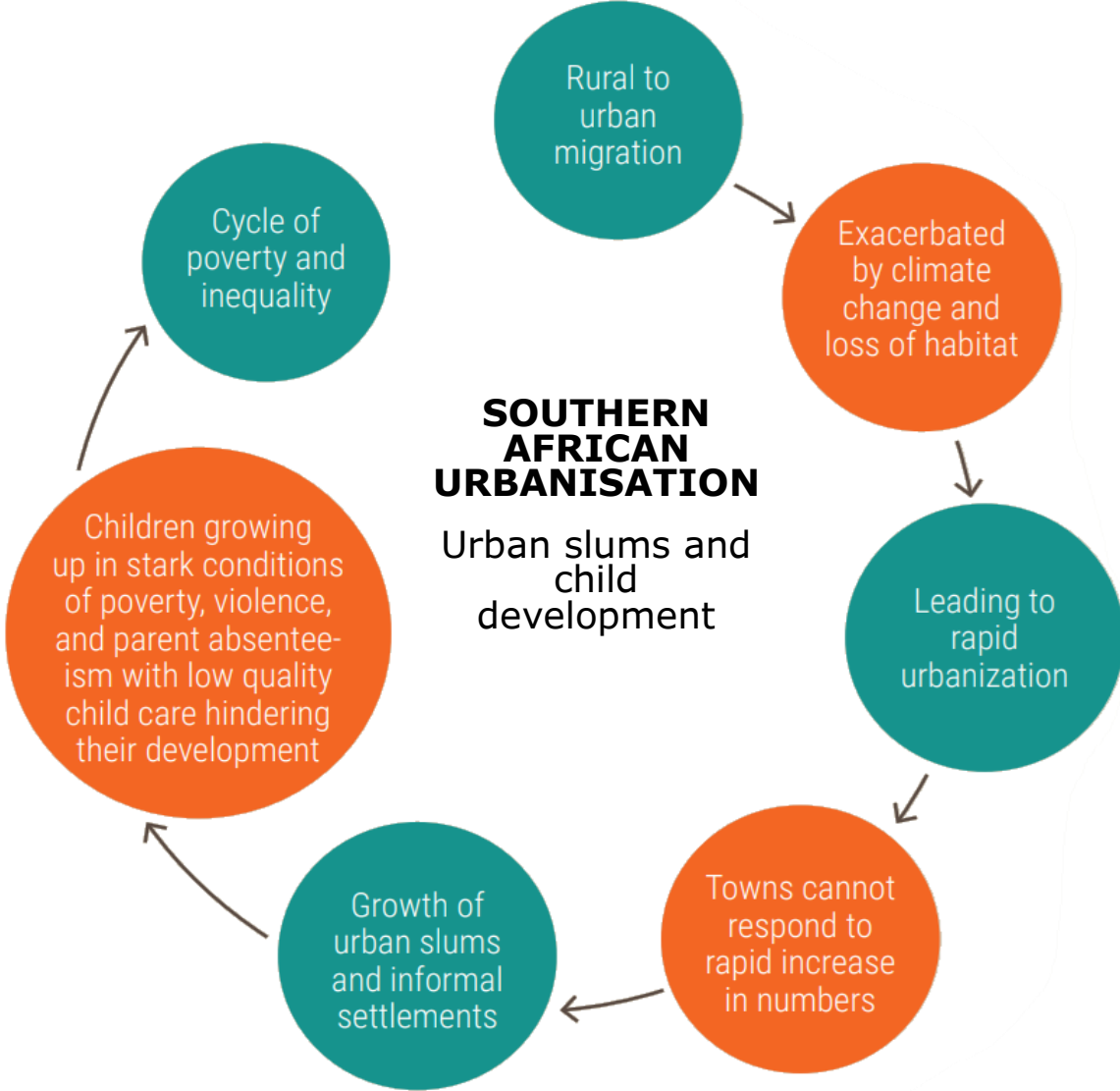
Jessica K. Brown  
ECD Programme Director  
Development Workshop

 **PLAY FOR ALL**



# Changing demographics

- More than **87 million** people now reside in informal settlements in Southern Africa
- Childcare is an essential part of the informal settlement economic model.
- Parents seek work in the cities with long commutes.
- Child in low-cost, low-quality childcare.





 **PLAY FOR ALL**





# PLAY FOR ALL



# Development Workshop's interventions

## Housing for All

- Affordable services land and low-cost housing programme assists **11 towns** to get informal settlement growth under control
  - Currently **4,000 plots** in **17 residential areas** benefiting An **additional 9,000 plots** are planned for the next three years. Including bulk infrastructure for towns.

## Sanitation for All

- It is currently implemented in **10 towns**. More than **5,000 toilets** have been built as a result of the programme and **13 informal settlement areas** are now declared Open Defecation Free (ODF), creating a healthier environment for more than **68,000 residents**.

## Play for All

We support **268 ECD centres** (Kindergartens) in **6 town** across 5 regions in Namibia. benefitting some **17,000 children** since inception in late 2019.



Teacher training



Provision of learning and teaching materials



Small grants for centres improvements



Parents support



Water and sanitation



Nutrition programme



# Data driven and adaptive

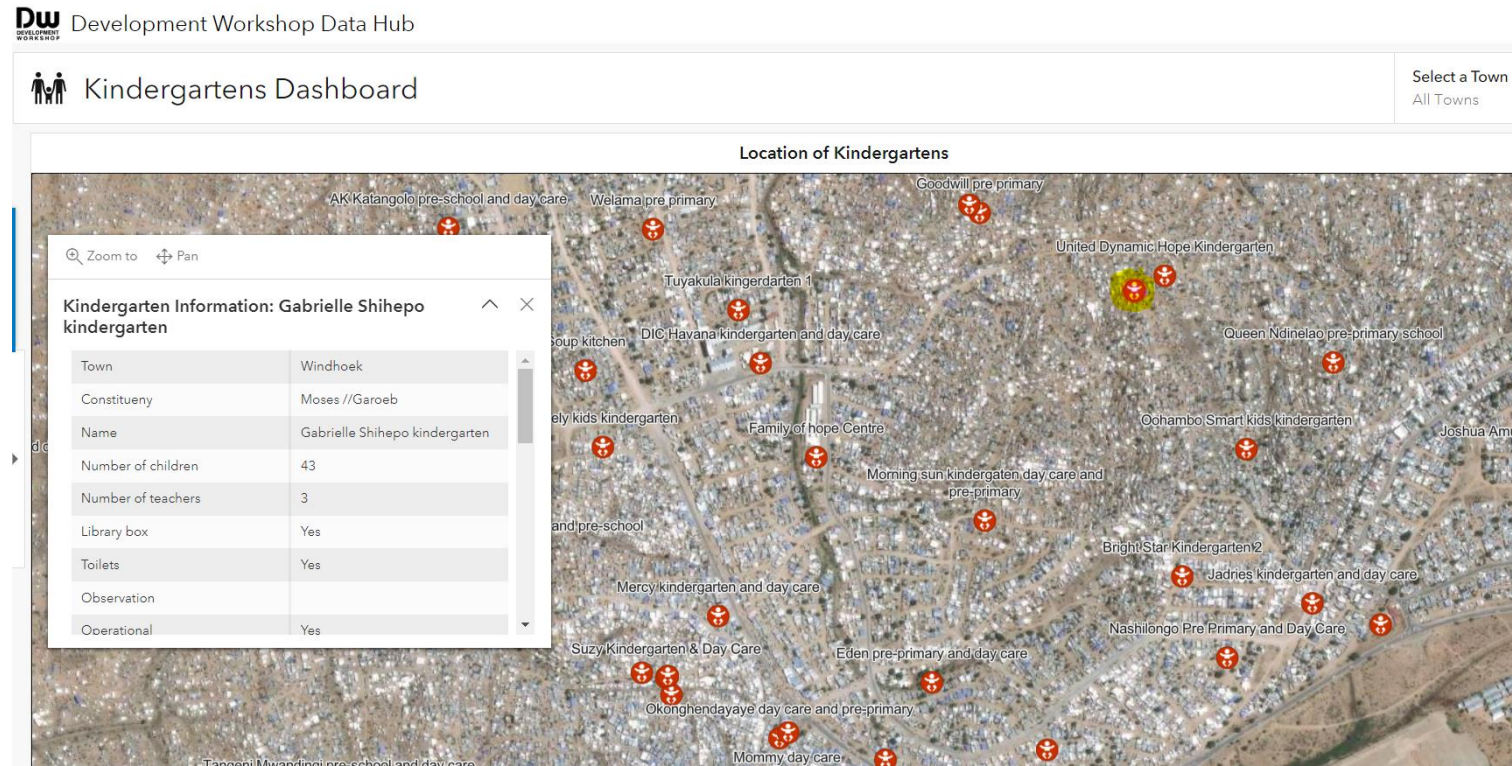
- GIS Mapping all ECD centres in the informal settlements to assess their needs.
- Teams in the field with App for automatic updates to respond to changes in data, changes in need.
- Regular feedback loops with teachers, community, children.
- Using trackers to monitor our progress.
- Cross-referencing with our other projects.

Dw Development Workshop Data Hub

Kindergartens Dashboard

Select a Town  
All Towns

### Location of Kindergartens



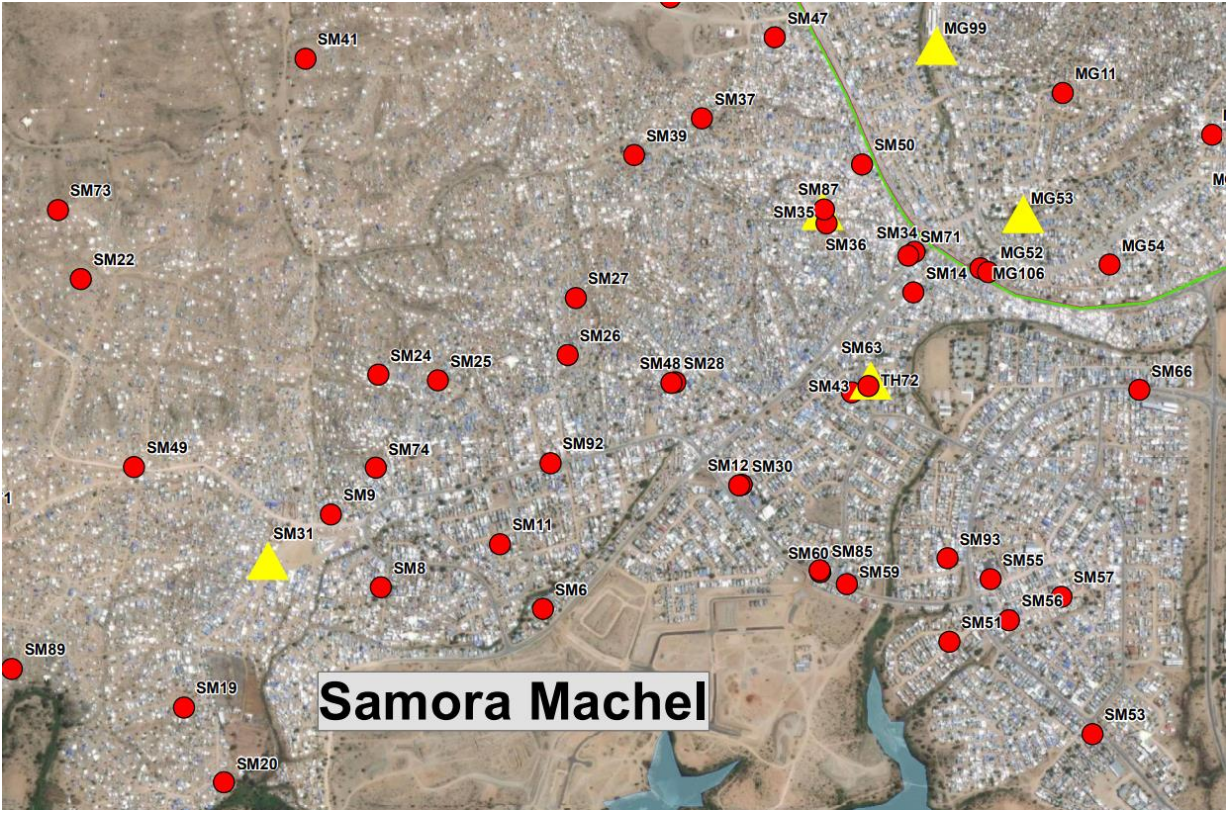
Zoom to Pan

Kindergarten Information: Gabrielle Shihepo kindergarten

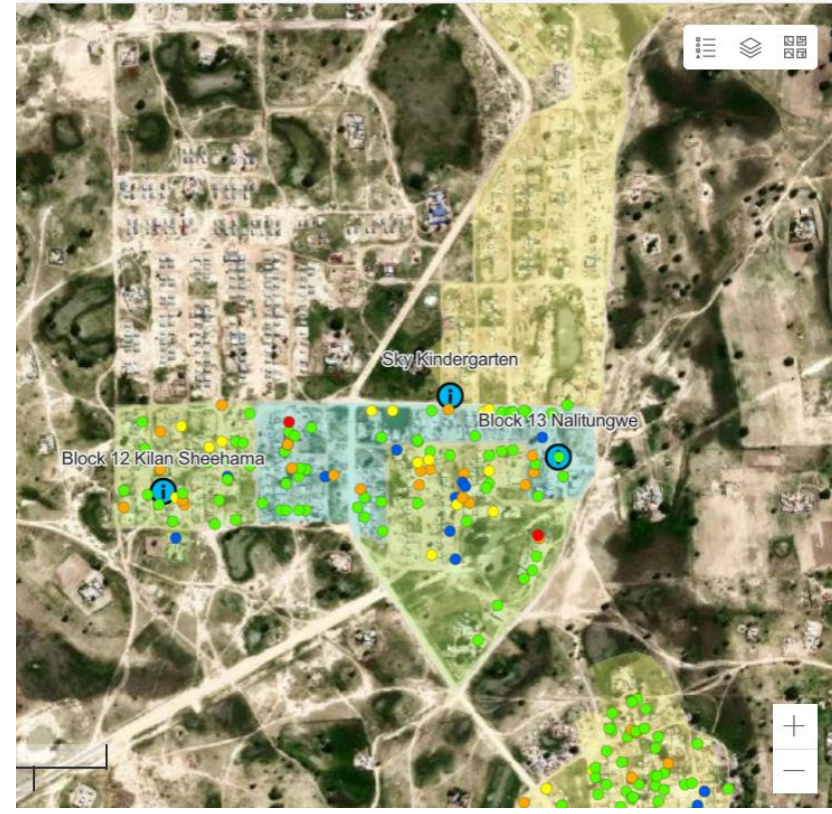
Town	Windhoek
Constituency	Moses //Garoeb
Name	Gabrielle Shihepo kindergarten
Number of children	43
Number of teachers	3
Library box	Yes
Toilets	Yes
Observation	
Operational	Yes



# Data driven and adaptive



**Beacon Centres in Samora Machel Constituency**

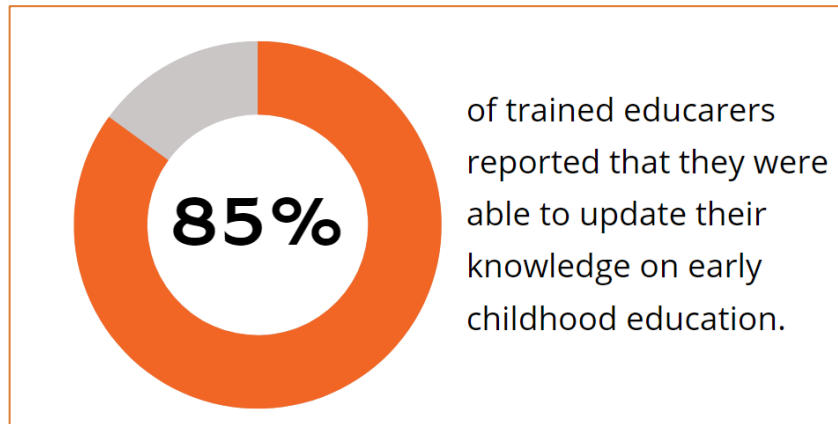


**Mapping ECD centres against sanitation interventions**

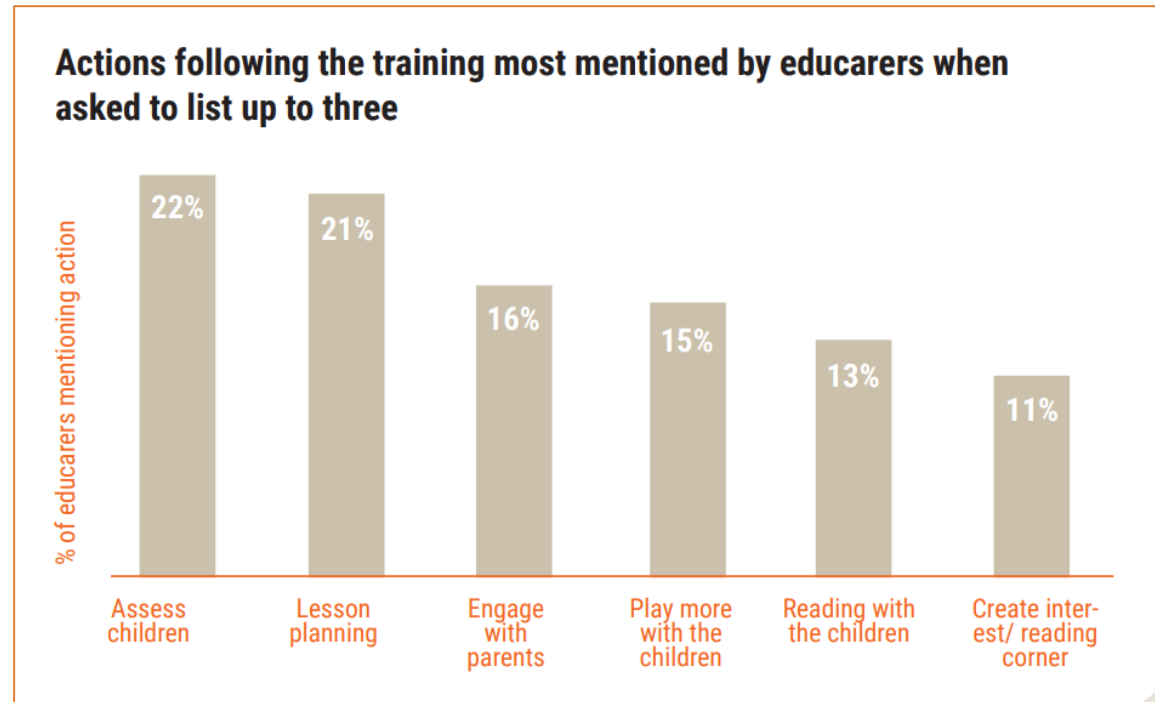
Number of Sanitation Centers Built	<b>61</b>
Number of Ablution Facilities for Informal Markets Improved	<b>10</b>
Number of Areas ODF Certified	<b>13</b>

# Monitoring, support, feedback

- **296 educarers** benefited from training in 2022. Training is based on the Government curriculum. Emphasis on play-based, child-centred practices. With regular adaptation based on feedback.
- **3,505 children** are taught by these educators, benefitting from improved practice.
- **108** Play for All follow up support visits to educarers in their classrooms were conducted – challenges and solutions co-identified.



*“I already saw the impact of the training on my job. It's very effective.”*  
 (quote from a trained educarer)





# Contextualized, home-made or locally adapted

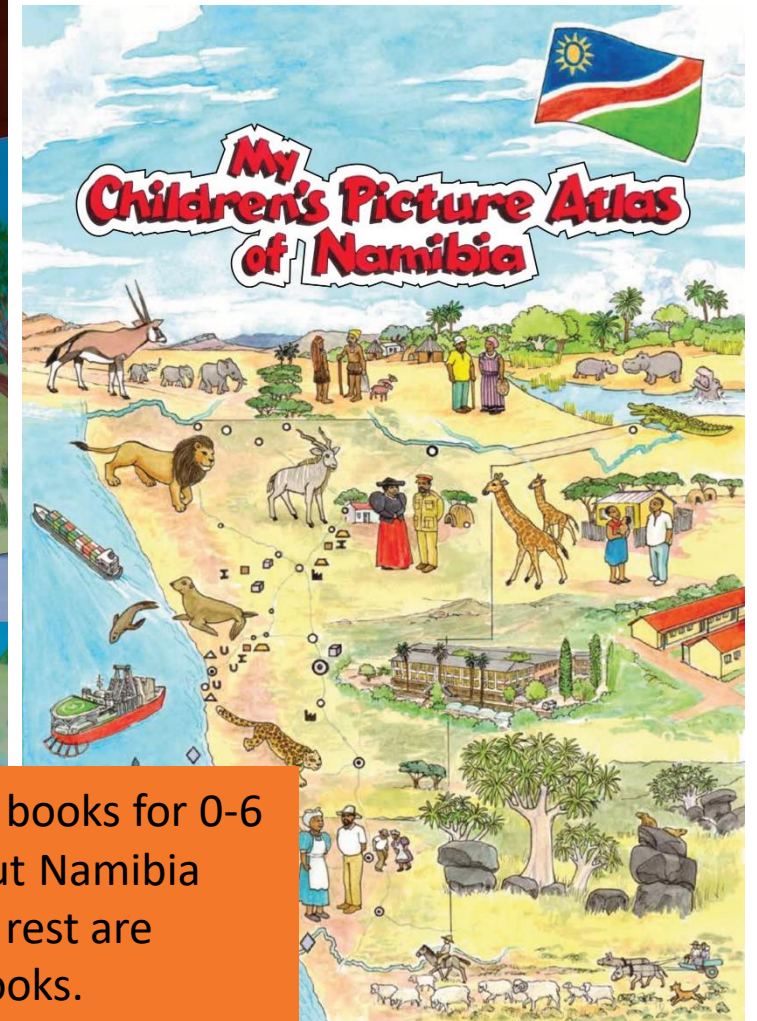
PLAY FOR ALL





# Contextualized, home-made or locally adapted

PLAY FOR ALL



Play for All distributed 47,241 books for 0-6 year olds in 2022. 4 books about Namibia were created in-house and the rest are translated open-source storybooks.



# Individualized support for ownership

- **Grants directly to centres** for centre improvements:
  - Classroom extensions
  - Shade
  - Toilets
  - Playgrounds
  - Fences
  - Furniture/rugs
- Contribution from centres (in-kind) and parental /community involvement.
- Play for All team advises, supports and monitors fund use.


Since 2021 – **51** centres have benefitted from **Play for All** centre improvements.




# Explore our data



## PROGRAMME RESULTS SUMMARY




**DW DEVELOPMENT WORKSHOP**  
**PLAY FOR ALL**



Development Workshop (DW) Namibia started the **Play for All** early childhood development (ECD) programme at the end of 2019 by reading to children and providing library boxes in two ECD centres in Windhoek's informal settlements (slums). Since then, the programme has grown to reach children across six towns in Namibia in the following areas.

1. Educarer training
2. Parents engagement sessions
3. Provision of teaching and learning materials
4. Centre improvements including sanitation
5. Nutrition programme

### QUICK OVERVIEW

<b>251</b> ECD centres reached in 2022.	<b>8,751</b> children reached by at least one DW ECD programme in 2022. Around <b>52% of these are girls.</b>	<b>Play for All</b> employs an integrated approach, with the majority of ECD centres reached with more than one programme area. This means providing holistic support to young children for a more profound impact.	 <b>Play for All</b> is data-driven, reactive to need, and adapted to local contexts.
--	---	---	--





# Thank you!

## For more information:

Jessica K. Brown  
ECD Programme Director  
Development Workshop  
j.brown@dw-namibia.org



## Track our Progress



DW Website



DW Data Hub



DW Instagram

## Our partners and donors



Ministry for Foreign Affairs of Finland

