

Learning Through Play: What is evidence telling us?

Southern Africa ECED Conference

Lusaka, Zambia

March 28–30, 2023



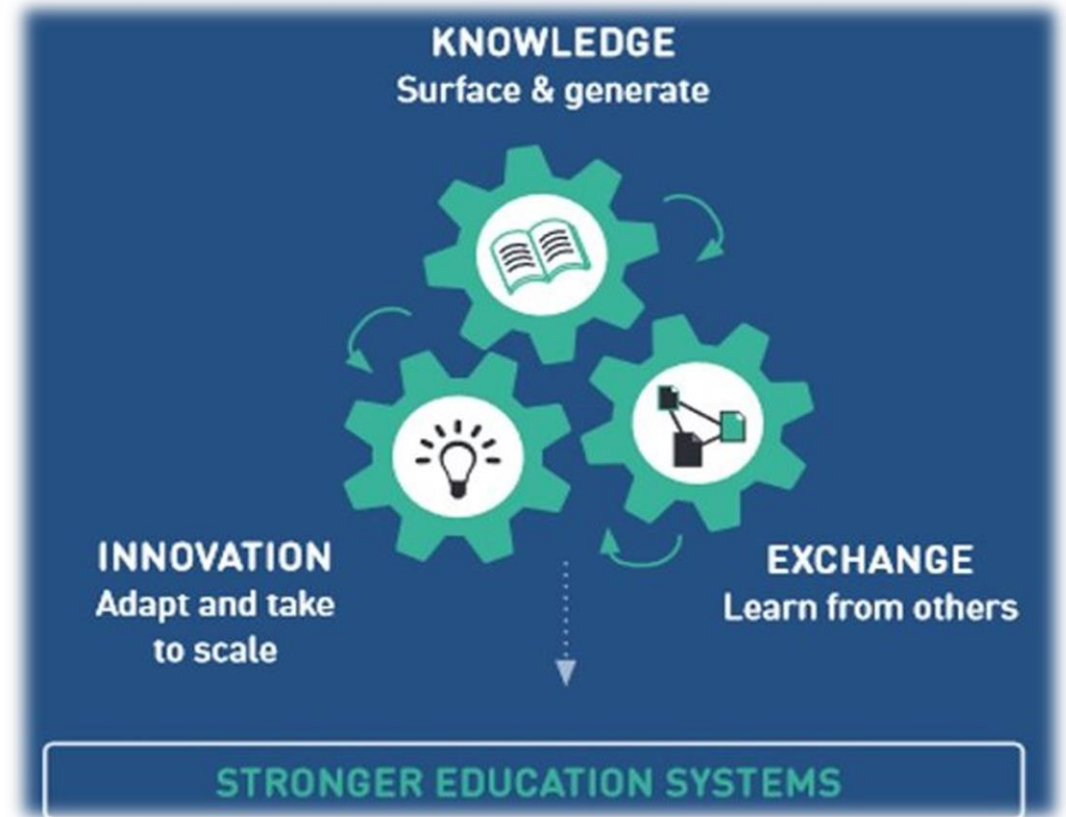
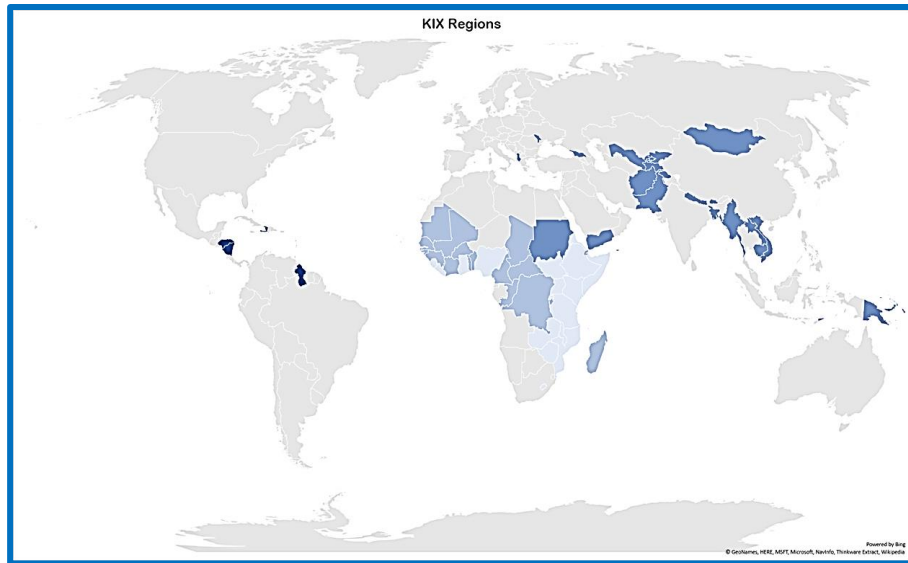
Canada



About the Knowledge and Innovation Exchange Program



KIX is a joint endeavour between the International Development Research Centre and The Global Partnership for Education



KIX in a nutshell



GPE KIX ECE Objectives



- Build knowledge about innovative solutions to shared policy challenges related to quality early learning, including the transition between pre-primary and early grades of primary school and how the positive impacts of these innovations can be scaled;
- Support the use of that knowledge in and across education systems for policy, practice and technological development and implementation; and
- Strengthen capacities to generate and use knowledge and innovation for early learning.

Why GPE KIX is investing in Early Learning

- 1) Evidence is key
- 2) Existing innovations that remain at pilot stage – How to scale beyond pilot, into policy and practice
- 3) Supporting southern led research and partnerships
- 4) Mobilizing knowledge sharing, exchange and learning
- 5) The need to continue mobilising resources towards early learning



Research Questions



How can existing mechanisms and frameworks for enhancing school readiness and transition from pre-primary to primary school be strengthened?

How can proven or promising learning through play approaches be adapted and how can they scale in low resource contexts, promoting gender equality, equity and inclusion?

How can existing approaches for building capacity of parents, caregivers, communities and school leadership to enhance learning through play and support transition to primary school be strengthened?

How can early years and early primary school curriculum, assessment and learning environments be improved to be more in line with how young children learn best?

How can teachers' capacity to enhance learning through play approaches be strengthened and how can existing models for teacher professional development be adapted at national, district or school levels?

Emerging findings from KIX early learning projects



- 1) Targeted funding of ECE
- 2) Map out various players
- 3) Knowledge mobilisation is critical, from the beginning
- 4) Context matters
- 5) Gender, equity and inclusion must be considered

Emerging findings: Involving policy makers



- 1) Identify and align priorities with priorities of countries
- 2) Opportunities for knowledge and experience sharing and learning
- 3) Develop scaling and knowledge mobilisation strategies

Put your
money where
your mouth is



