

2020 ECD Country Profiles

Linda M Richter

University of the Witwatersrand, South Africa

AfECN Board Member &

Chair of the Nurturing Care for Early Childhood Development

Metrics Joint Technical Working Group of the *Countdown to 2030*

- The **Country Profiles of Nurturing Care for ECD** grew out of the 2017 Lancet series *Advancing Early Childhood Development: From Science to Scale*
- Created in 2018 to **track progress and monitor accountability**
- Now part of **Countdown to 2030** for Women's, Children's and Adolescents' Health in 2019
- Since 2019 the profiles are **maintained and updated by UNICEF**

Nurturing care is the framework for the country profiles



NURTURING CARE
FOR EARLY CHILDHOOD DEVELOPMENT

The 5 components of Nurturing Care: good health, adequate nutrition, security and safety, early learning and responsive caregiving



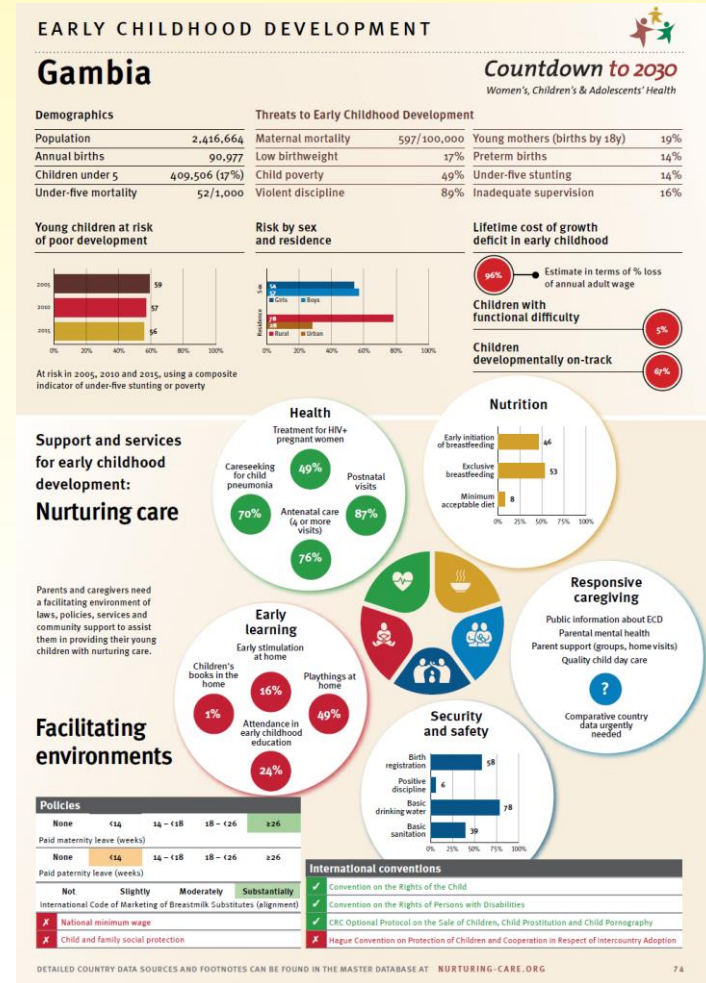
Facilitating environments for the components of Nurturing Care: caregivers, communities, services, policies caregiving



Nurturing care at the heart of global goals: The SDGs and Survive, Thrive and Transform

Country profiles

- Demographics (4), threats to ECD (8) + disability
- 5 components of nurturing care
 - Health (4)
 - Nutrition (3)
 - Security and safety (4)
 - Early learning (4)
 - Responsive caregiving (TBD)
- Facilitating environment
 - Policies (5)
 - International conventions (4)
- Evaluation
 - 2005-2015 trend in children at risk
 - Gender & residence differences
 - Lifetime cost of early growth deficits
 - Children on track on the ECDI



42 Indicators

Data

Sources

- UNICEF Multiple Indicator Cluster Surveys (MICS)
- USAID Demographic and Health Surveys (DHS)
- Selected representative household surveys in countries
- Country data published in high impact journals

Definitions, dates, and countries for which data are available

- Technical appendix

Country profiles 2018, 2019 and 2020

2018

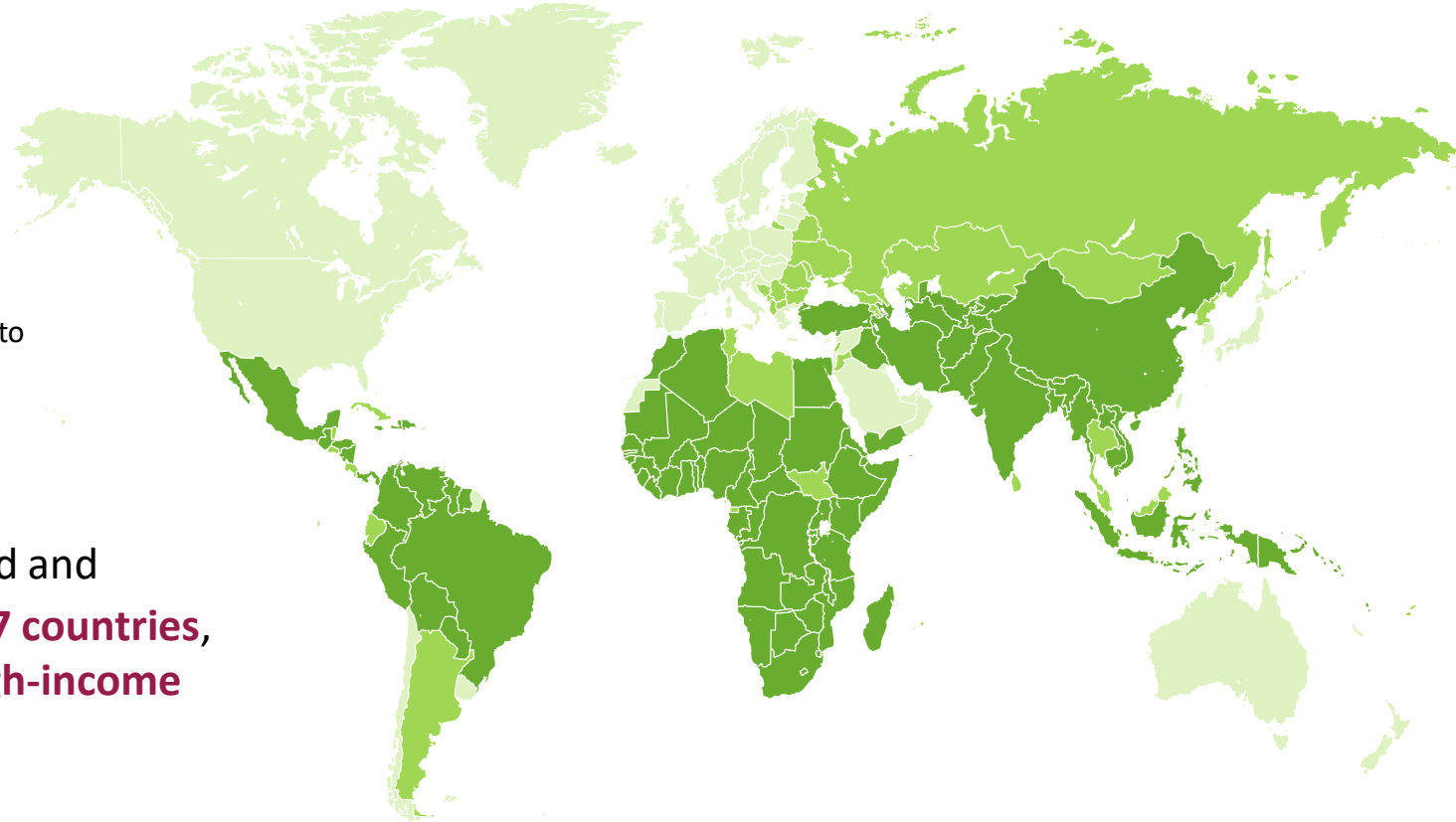
First ECD Country Profiles - **91 low- and middle-income countries**

2019

Updated and extended to **138 low- and middle income countries**

2020

Profiles updated and extended to **197 countries**, including **63 high-income countries**



ECD 2030



Countdown to 2030

Women's, Children's & Adolescents' Health

Nearing a global picture of ECD

2020 ECD Country Profiles

- Launched 23 Nov 2020
- Added 63 high-income countries
- 2 additional indicators
- 1 improved indicator
- Translated into 4 additional languages

Additional indicators

➤ % Children developmentally on track

% children 3-6y developmentally on track in at least three ECDI domains: literacy-numeracy, physical development, social-emotional development and learning (2010-2019)

➤ % Children with functional difficulty (disability)

% children 2-4 years with a functional difficulty in at least one domain on the child functioning module: seeing, hearing, walking, fine motor, communication, learning, playing and controlling behavior (2017-2019)

Revised - paid maternity and paternity leave

2018 & 2019

Maternity leave: 100% wages,
paid for 14 weeks (ILO 183)
Any paternity leave

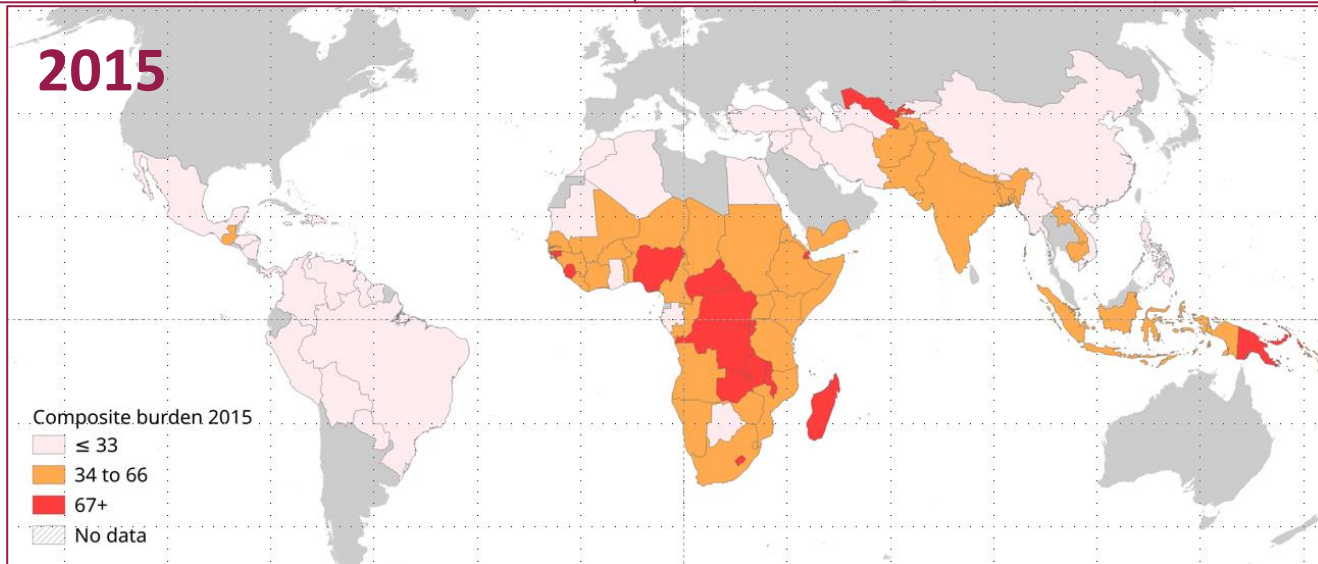
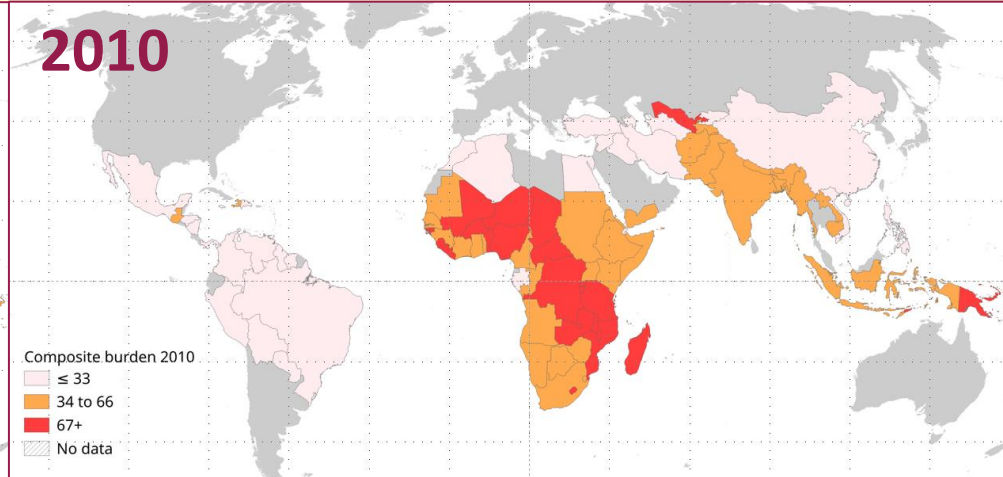
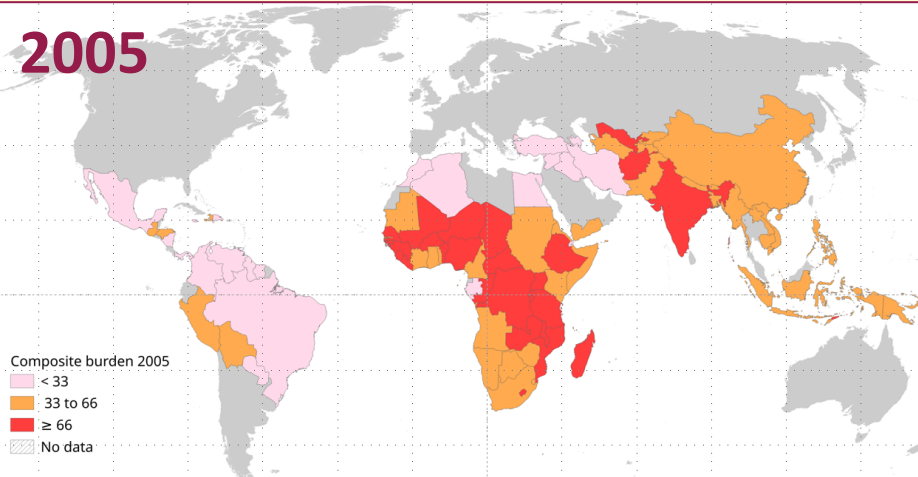
Policies	
X	Paid maternity leave
✓	Paid paternity leave

2020

Maternity/paternity leave on
same scale
Includes aspirational targets

Policies				
None	<14	14 – <18	18 – <26	≥26
Paid maternity leave (weeks)				
None	<14	14 – <18	18 – <26	≥26
Paid paternity leave (weeks)				

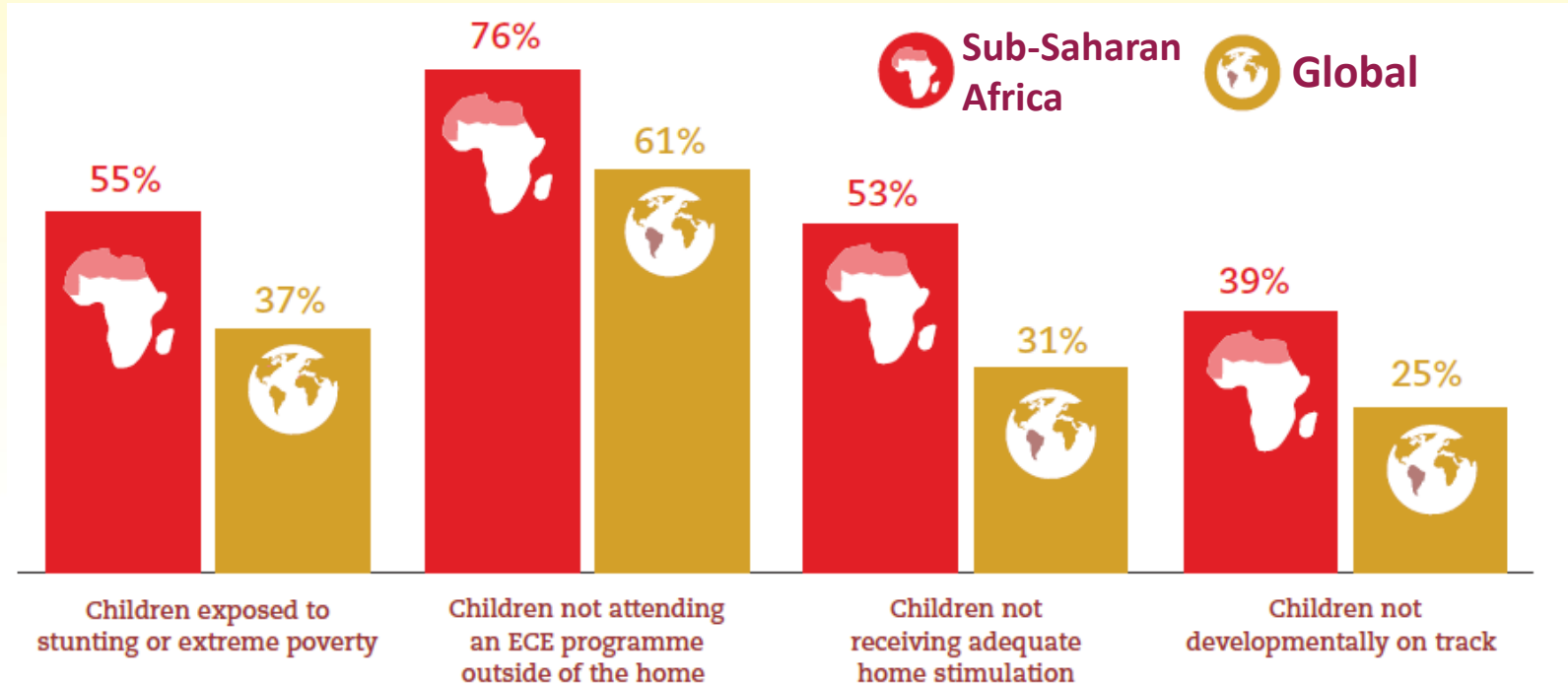
Progress - children at risk of poor development



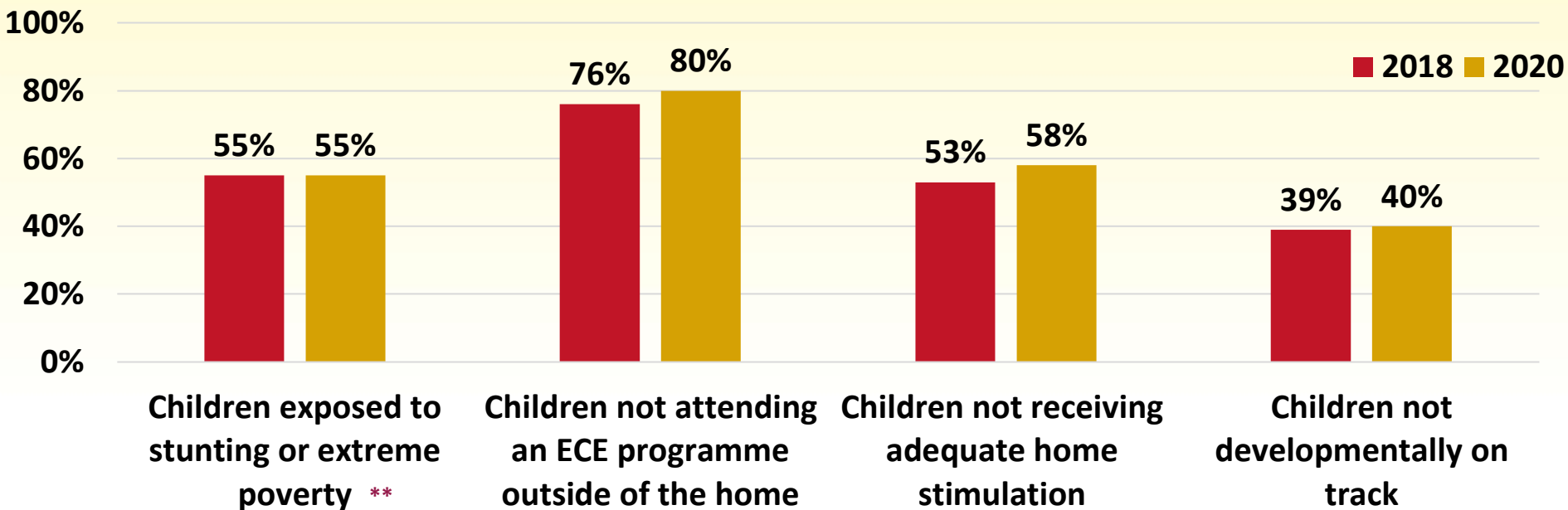
Key findings (2010 – 2018)

- On average **rural children fare worse** than urban children
- Children from **poorer households fare worse** than children from richer households
- Negligible differences between young **girls and boys**
- **Focus on SSA** to prevent early loss of critically important human capital

Children in SSA most disadvantaged on all ECD 4 indicators (2010-2018)



Comparing 2018 and 2020 data for SSA



**2015 data used for both years

Threats to young children in SSA 2020

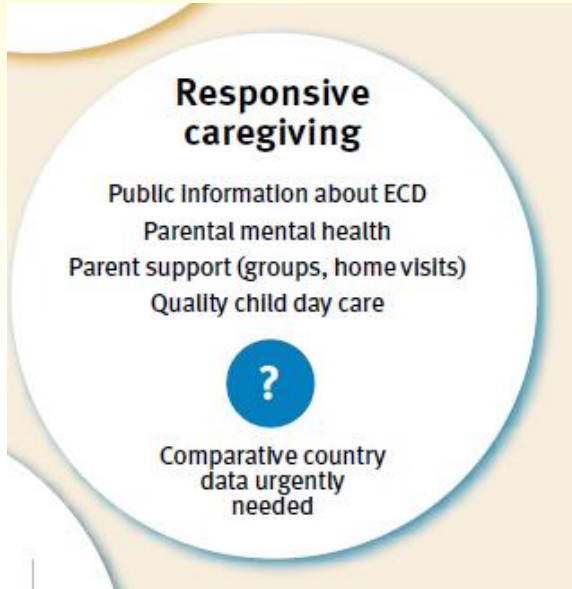
	Global average	HIC Average	LMIC Average	SSA Average	SSA Range
Low-birth weight	10%	8%	12%	14%	7%-24%
Preterm birth	10%	8%	11%	13%	8%-18%
Young mothers	16%	22%	18%	27%	6%-51%
Under-5 stunting	21%	9%	25%	31%	14%-54%
Inadequate supervision	16%	11%	18%	32%	16%-61%
Harsh punishment	72%	61%	73%	79%	61%-94%

Important gaps in data

- Responsive caregiving
- Indicators on which we have the most and least data
- Trend data
- Data we need to prioritise getting

Responsive caregiving

Need definitions, indicators and data for an important component of **Nurturing Care**

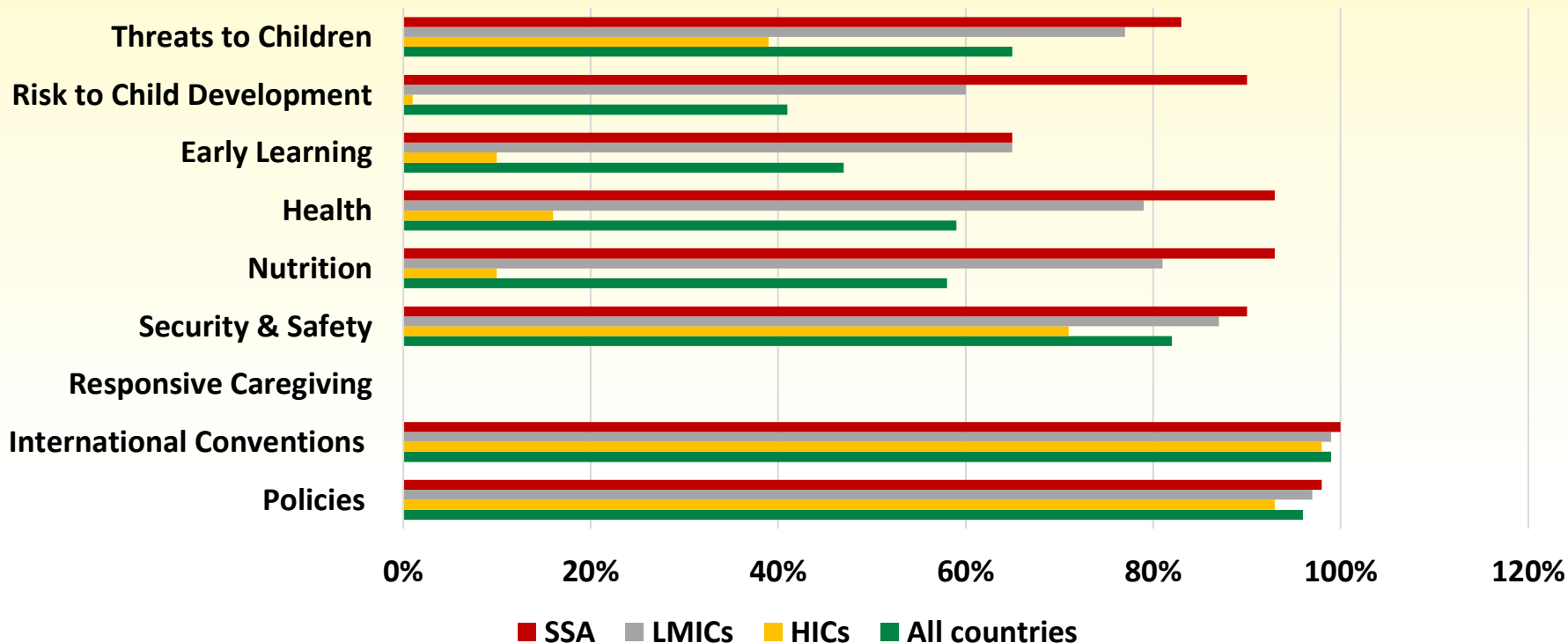


Progress

- WHO 2020 Guideline on Early Childhood Development: Responsive Caregiving and Early Learning
- Current - WHO/UNICEF/World Bank Nurturing Care Framework Working Groups (Monitoring & Evaluation and Implementation)

Gaps in data

Percentage of countries with data on indicators within a domain



SSA has good data – we need to use it!

Definitions, indicators and data we need

- Children in residential institutions
- Parental mental health
- Affordable quality day care
- Indoor and outdoor air pollution
- Others ...



From Data to Action

Key insights into global early childhood development
from country-comparable data



NURTURING CARE
FOR EARLY CHILDHOOD DEVELOPMENT

The ECD Country profiles **present in one place** the **latest information** to assess **country progress** in improving the health, development and future prospects of young children all over the world

View and download the Country Profiles, Data Sets, Sources and Methods of data collection from the following web pages



<https://data.unicef.org/resources/countdown-to-2030-ecd-country-profiles/>



<https://www.countdown2030.org/early-childhood-development-profiles%20>



<https://www.ecdan.org/countries.html>



<https://nurturing-care.org/resources/country-profiles>

Thank you !



NURTURING CARE
FOR EARLY CHILDHOOD DEVELOPMENT

ECD 2030 
Countdown to 2030
Women's, Children's & Adolescents' Health